

# PHASE ONE INSTANT CAPTURE

The Transparency Kit

PHASE**ONE**

what the world's best photography is made of

# Phase One

## Cultural Heritage

### Speed

With a capture rate of one image per second, the Phase One Film Capture Kit is up to 400 times faster than flatbed, drum or virtual-drum scanners.

### Accuracy, Consistency and Reliability

Regardless of the size of the original glass or film negative or transparency, the Transparency Kit provides a consistent and reliable workflow, ensuring that the highest levels of image quality and accuracy are met. The geared film stage allows for smooth, light adjustment in two axes and for accurate positioning of material. The various holders are designed so that material can easily and repeatedly be centered under the camera. Adjustable feet provide stability and guarantee that stage and material remain level.

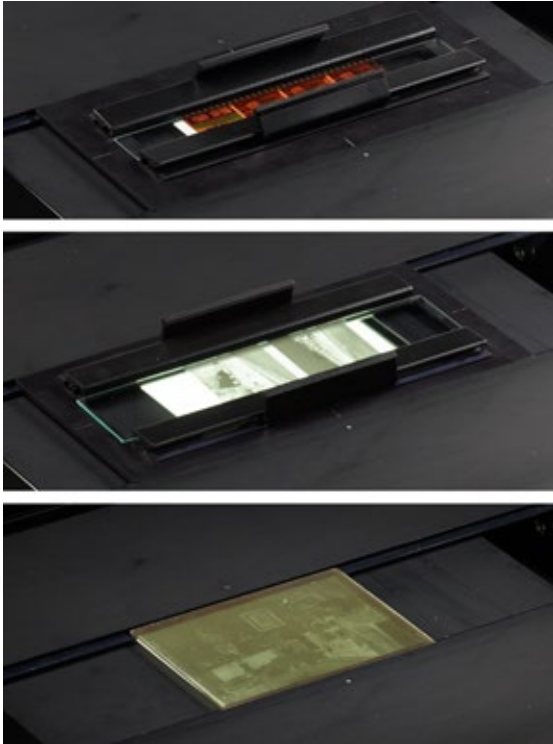


### Flexibility

The Phase One Film Capture Stage provides an adjustable support mechanism and is compatible with a range of carriers for glass plate negatives as well as most popular film strip and sheet formats. It can be easily adjusted to position the object directly under the camera. Made of high-grade aluminum ensures longevity and reliability for many years.

### Convenience

The film carriers, also made from aluminum, are designed to maintain film flatness with minimal amount of stress and easy mounting/dismounting. They gently hold the film's edges flat and ensure that framing can be kept consistent and accurate.



## Adaptability

The glass plate carriers support most common as well as odd plate formats and are equipped with an optically optimized glass base. These too are made of high-grade aluminum and are built to last. They provide an economical solution for almost all types and sizes of plates.

## Safe Handling

With sensitive glass, film transparencies and negatives, material handling and its safety are key. The Phase One Film Capture Kit offers the ideal solution for a wide range of applications.

## No Compromise

The Phase One XF Camera System and the Phase One iXG Camera System come with dedicated Schneider Kreuznach 120mm lenses designed to produce a flat image and thus ensuring maximum resolution and sharpness across the frame.

## End to end

Capture One CH offers an improved workflow that automates the conversion of negative transparent material in both black & white and color. The results are perfect, ready for print or post processing. A selection of Cultural Heritage styles allow one to quickly choose a set of conversion parameters for different film types.



CULTURAL HERITAGE

# Components

## The Transparency Kit consists of

- Phase One iXG 50MP or Phase One XF IQ3 50MP Medium Format Camera System
- Phase One RSP RePro Motorized Copy Stand
- Phase One Film Capture Stage
- Optional film carriers for most common formats: 35 mm strip, 120 mm strip, 4 x 5 in. sheet, 9 x 12 cm sheet, 8 x 10 in. sheet and 35 mm mounted slides.
- Optional glass plate carriers for most common formats
- Optional Kaiser 2436 Lightbox, 60 x 50 cm, High Frequency dimmable
- Optional extension tubes for higher resolution/ magnification
- Capture One CH

## Benefits and features

- Easy, foolproof operation with geared, accurate adjustments
- Solid, reliable and durable build
- Flexible and modular design
- Up to 400 times faster than traditional scanners

- Consistent, reliable Autofocus with excellent manual option Live View adjustment
- 300MB 16-bit output size

## Specifications

Dimensions (WxHxD) 730x216x700 mm (28.7x8.5x27.5 in.)

Weight approx. 13.5 kg (29.7 lbs)

## Supported film formats

- 35 mm strips
- 120 mm strips
- 9x12 cm
- 13x18 cm
- 18x24 cm
- 4x5 in.
- 8x10 in.
- Mounted 35 mm slides

## Supported glass plate formats

- 9x12 cm
- 13x18 cm
- 18x24 cm
- 24x30 cm



Phase One iXG Medium Format Camera System



Phase One XF Medium Format Camera System



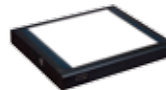
Schneider Kreuznach RS 120 mm Macro iXG lens



Schneider Kreuznach LS 120 mm f/4.0 Macro lens



Phase One Film Capture Stage, Carriers and Holders



Kaiser 2436 Lightbox: 60x50 cm, High Frequency, dimmable



Capture One Cultural Heritage



Phase One RSP RePro MOT

For more Information, please visit [www.phaseone.com/cultural-heritage](http://www.phaseone.com/cultural-heritage)

**B3K**  
EXCEPTIONAL EQUIPMENT

Exclusively imported by  
B3K Digital  
[www.b3kdigital.com](http://www.b3kdigital.com)  
[info@b3kdigital.com](mailto:info@b3kdigital.com)  
416-628-8044